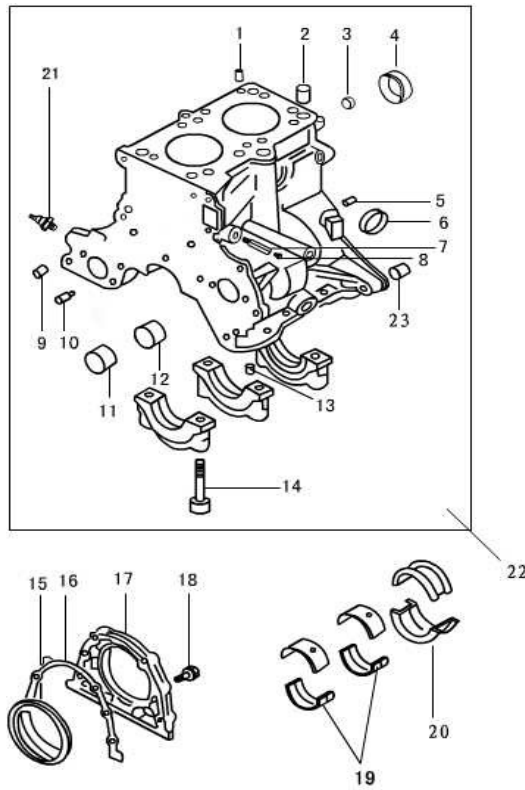
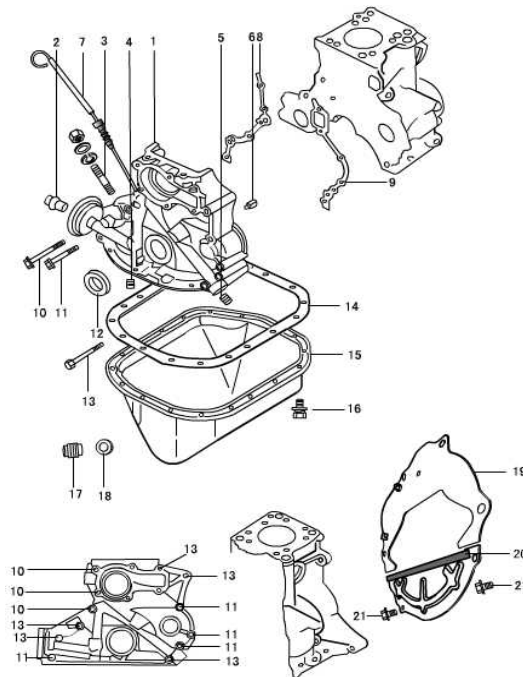


**1 CYLINDER BLOCK PART**

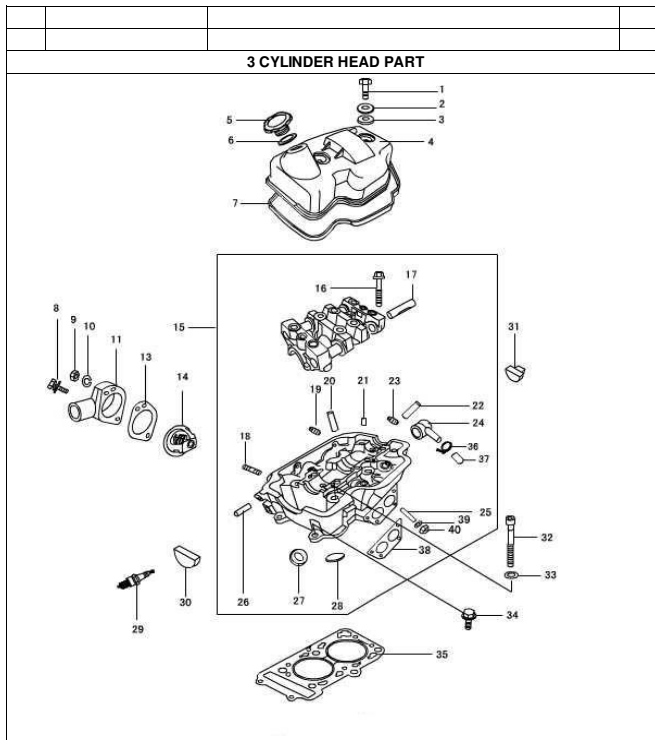


No.	Code name	Description	QTY	QTY-I/S	QTY-O/H	RETAIL
1	270Q-02009	oil feed plug	1			0.60
<b>1 CYLINDER BLOCK PART</b>						
<b>No.</b>	<b>Code name</b>	<b>Description</b>	<b>Qty</b>			<b>0.54</b>
2	LJ462Q-1-1000028D	Cylinder head locating dowel	2			0.54
3	QTB55	Plug $\phi 10.5 \times 7$	1			0.54
4	QTB54	freeze plug $\phi 40$	1			0.78
5	GB/T119-1986	Pin $\phi 6 \times 18$	2			0.42
6	QTB542	freeze plug $\phi 30$	3			0.78
7	270Q-02013	Tie-in pipe of drive valve	1			1.50
8	QTB28	Hexagon-headed taper bolt NPT1/4	1			0.72
9	QTB42	Hollow-swage locating pin $\phi 11 \times 12$	2			0.54
10	270Q-02004	Jetting pipe	1			0.78
11	270Q-02003	Front bearing of balancing shaft	2			#VALUE!
12	270Q-02011	Rear bearing of balancing shaft	2			#VALUE!
13	QTB54	Calathiform plug 8x9	1			0.78
14	270Q-02102	Main bearing cap bolt	6			#VALUE!
15	QTB53A	Crankshaft rear oil seal with unidirectional flow around FB60x78x7	1			9.72
16	270Q-02008	Rear oil seal housing gasket	1			0.78
17	270Q-02007A	Rear oil seal housing	1			11.88
18	LJ462Q-1-1000082D	Flywheel bolt	4			0.30
19	270Q-04007	Crankshaft bearing bushing	4			8.22
20	270Q-04008	Crankshaft thrust bearing bushing	2			12.60
21	270Q-02006C	Oil pressure switch	1			7.74
22	276Q-0210D	Cylinder block and bearing cap assembly	1			613.56
23	QTB42	Hollow-swage locating pin $\phi 13 \times 15.5$	2			0.72

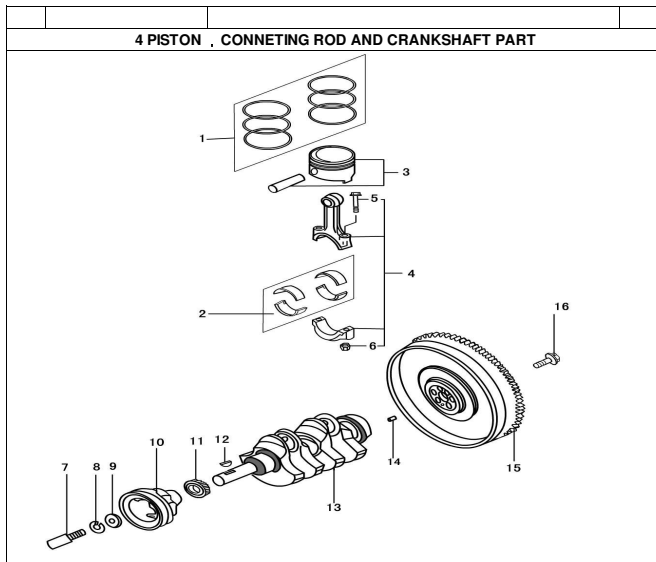
**2 SPROCKET COVER AND OIL PAN PART**



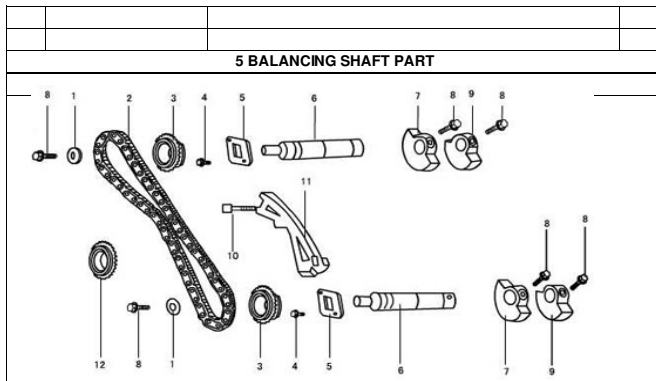
No.	Code name	Description	Qty	QTY-I/S	QTY-O/H	RETAIL
1	276Q-02201	Sprocket cover	1			147.24
2	270Q-02202	Oil filter threaded sleeve	1			2.64
3	GB/T900-88	Taper bolt AGM8-M8x22-8.8	1			0.54
4	QTB23	Hexagon-headed taper bolt NTP1/4	1			0.72
5	QTB23	Hexagon-headed taper bolt NTP3/8	1			0.72
<b>2 SPROCKET COVER AND OIL PAN PART</b>						
						0.00
No.	Code name	Description	Qty			
6	270Q-02004	Jetting pipe	1			0.78
7	LJ276MT-2-02400	Dipstick	1			3.42
8	270Q-02001	Left gasket of sprocket cover	1			0.90
9	270Q-02002	Right gasket of sprocket cover	1			0.90
10	QTB10	Hexagon-headed bolt with edge M8x88	3			1.20
11	QTB10	Hexagon-headed bolt with edge M8x68	4			1.08
12	QTB53A	Crankshaft front oil seal with unidirectional flow around FB35x50x8	1			4.74
13	QTB10	Hexagon-headed bolt with edge M8x78	3			1.08
14	270Q-02005A	Oil Pan gasket	1			1.50
15	LJ276MT-2-02300	Oil Pan assembly	1			40.02
16	GB/T9074.17-1988	Bolt assembly M6x12	18			0.42
17	QTB24	Drain Plug M14x1.5	1			1.38
18	270Q-02303B	Drain Plug gasket	1			0.24
19	276MT-2-02500	backing plate	1			16.86
20	LY-1701220-01	Tird and forth gear assy	1			0.00
21	QTB10	Hexagon-headed bolt with edge M6x10	2			0.90



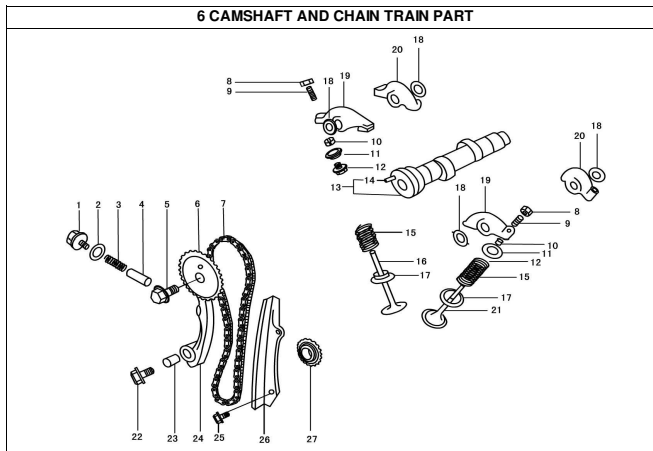
No.	Code name	Description	Qty	QTY-I/S	QTY-O/H	RETAIL
1	GB/T5782-1986	Bolt M8×40	2			0.54
2	270Q-01009	washer of cylinder head cover bolt	2			0.24
3	270Q-01011	Rubber pad of cylinder head cover bolt	2			0.54
4	276Q-01300	Cylinder head cover assembly	1			43.32
5	270Q-01400B	Filler cap assembly	1			2.94
6	270Q-01403	Filler cap rubber washer	1			0.54
7	270Q-01012B	Seal ring of cylinder head cover	1			1.56
<b>3 CYLINDER HEAD PART</b>						
0.00						
No.	Code name	Description	Qty	QTY-I/S	QTY-O/H	RETAIL
8	GB/T9074.17-1988	Unit bolt M8×30	1			0.72
9	QTB15	Nut M8-8	5			1.20
10	GB/T93-1987	Spring washer φ8	5			0.30
11	270Q-01017	Thermostat housing	1			7.44
13	270Q-01016	Thermostat gasket	1			0.24
14	270Q-01015	Thermostat	1			9.66
15	270Q-01100	Cylinder head and camshaft bearing part				548.10
16	270Q-01109	Camshaft bearing bushing cap bolt	8			0.24
17	270Q-01007	Valve rocker arm shaft	4			#VALUE!
18	GB/T898-1988	Stud AGM8×25-8.8	2			0.54
18a	GB/T899-88	Stud AGM8×28-8.8	2			0.54
19	QTB26	Square head taper plug NPT1/8"	1			0.72
20	270Q-01104	Inlet valve guide	2			#VALUE!
21	QTB40	Locating pin φ 6×14	6			0.42
22	270Q-01105	Exhaust valve guide	2			#VALUE!
23	GB/T899-88	bolt	1			0.72
24	270Q-01023A	Hexagon -headed taper plug	1			#VALUE!
25	GB/T898-1988	Stud AGM8-M8×20-8.8	4			0.54
26	270Q-01018	Minor water pipe	1			1.26
27	270Q-01102	Intake valve seat	2			#VALUE!
28	270Q-01103B	Exhaust valve seat	2			#VALUE!
29	270Q-01019B	Water Temperature sender unit	1			8.04
30	270Q-01013	Front Semi-Circle Oil Seal	1			7.02
31	270Q-01014	Rear Semi-Circle Oil Seal	1			5.04
32	270Q-01022	Cylinder head bolt	6			2.52
33	GTB30	head bolt washer φ21×φ11×3	6			0.54
34	GB/T9074.17-1988	Bolt assembly M8×28	2			0.72
35	276Q-01021	Cylinder head gasket	1			4.08
36	270Q-01025	Rubber blanking plug	1			0.60
37	ZB/TT32005.1-88	hose clamp	1			0.42
38	270Q-01024	Exhaust pipe gasket	1			0.72
39	GB/T93-1987	Washer8	4			0.12
40	QTB15	Nut M8-8	4			1.20
0.00						



No.	Code name	Description	Qty	QTY-I/S	QTY-O/H	RETAIL
1	276Q-03102	Piston ring assembly	1			52.26
2	270Q-03006	Connecting rod bearing	4			6.18
3	276Q-03001	Piston	2			15.12
	276Q-03004B	Piston Pin	2			0.78
4	270Q-03100	Connecting rod assembly(1)	2			49.26
		Connecting rod assembly(2)	2			0.00
5	270Q-03103	Connecting rod bolt	4			#VALUE!
6	270Q-03104	Connecting rod nut	4			#VALUE!
7	270Q-04001	front pulley bolt	1			1.56
8	GB/T859-1987	Spring washer 12	1			0.54
9	270Q-04002	Washer	1			0.60
10	270Q-04003	Crankshaft belt pulley	1			23.70
11	270Q-04004A	Driven bevel gear	1			23.70
12	QTB44	Woodruff key4×19	2			0.72
13	276Q-04006B	Crankshaft	1			144.24
14	LJ462Q1-1000135D	Locating pin of fly wheel	1			0.30
15	LJ368-1005011	Ring gear assembly of fly wheel	1			83.28
16	LJ462Q-1-1005014D	flywheel bolt	6			0.72



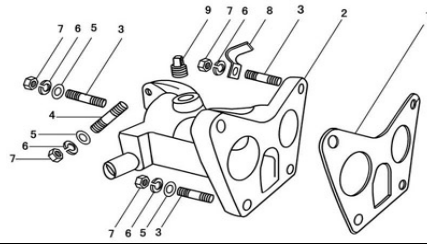
No.	Code name	Description	Qty	QTY-I/S	QTY-O/H	RETAIL
1	QTB30	Thick washer $\phi 24 \times \phi 8.5 \times 3$	2			0.54
	270Q-04400	Balancing chain assembly	1			16.56
3	270Q-04312B	Balancing shaft sprocket assembly	2			9.96
4	QTB10	Hexagon-headed bolt with edge M6x10	4			0.90
5	270Q-04301	Baffle plate of Balancing shaft	2			2.46
6	270Q-04302A	Balancing shaft	2			20.10
7	270Q-04303	Front balancing weight	2			5.58
8	270Q-04305	Balancing weight bolt	6			0.78
9	270Q-04304	Rear balancing weight	2			5.58
10	QTB10	Hexagon-headed bolt with edge M6x45	2			1.02
11	270Q-04200B	Guide pad assembly of balancing chain	1			8.10
12	270Q-04012A	Camchain drive sprocket	1			10.32



No.	Code name	Description	Qty	QTY-I/S	QTY-O/H	RETAIL
1	270Q-05400	Bolt assembly	1			1.20
2	270Q-05007	Washer	1			0.30
3	270Q-05005A	Tensioning spring	1			1.68
4	270Q-05004	Tensioning spring plate	1			1.08
5	QTB13	Small hexagon-headed bolt with edge M12×1.25×30	1			1.20
6	270Q-05002A	Camshaft timing sprocket wheel	1			15.12
7	270Q-05100	Timing chain assembly	1			20.52
8	270Q-01502	Valve clearance adjusting nut	4			1.20
9	270Q-01501	Valve clearance adjusting bolt	4			1.20
10	270Q-01004	Valve locker	8			0.42
11	270Q-01003	Retainer	4			1.50
12	270Q-01200	Stem seal	4			3.12
13	276Q-05001	Camshaft	1			47.22
14	QTB40	Dowel pin φ6×14	1			0.42
15	276Q-01002A	Valve spring	4			3.42
16	270Q-01005A	Intake Valve	2			5.34
17	270Q-01001	Lower seat of valve spring	4			0.54
<b>6 CAMSHAFT AND CHAIN TRAIN PART</b>						
						0.00
No.	Code name	Description	Qty			
18	270Q-01008	Wave form washer	4			1.50
19	270Q-01510	Valve rocker arm of first cylinder	2			11.88
20	270Q-01610	Valve rocker arm of second cylinder	2			11.88
21	270Q-01006	Exhaust Valve	2			7.26
22	QTB13	Small hexagon-headed bolt with edge M8×32	1			1.20
23	270Q-05003	Dowel	1			0.60
24	270Q-05300	Chain tightner	1			7.50
25	QTB10	Hexagon-headed bolt with edge M6×10	2			0.90
26	270Q-05200	Chain guide plate	1			3.00
27	270Q-04005A	Crankshaft timing chain sprocket	1			10.32

--	--	--

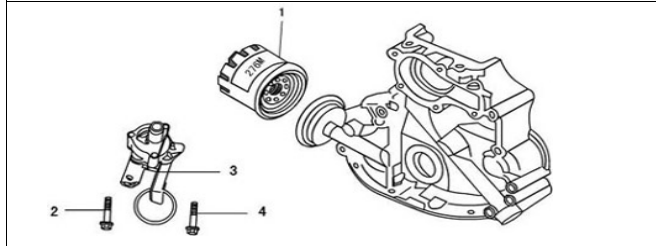
**7 INTAKE MANIFOLD PART**



No.	Code name	Description	Qty	QTY-I/S	QTY-O/H	RETAIL
1	270Q-06006	Intake manifold paper gasket	1			0.72
2	LJ276MT-2-06000	Intake manifold	1			38.52
3	GB/T898-1988	Stud AC-M8×25-8.8	4			0.54
4	GB/T899-1988	Stud AC-M8×28-8.8	2			0.54
5	GB/T848-1985	Flat washer	3			0.12
6	GB/T93-1978	Spring washer φ8	6			0.54
7	QTB15	Nut M8-8	6			1.20
8	QTB77	Clip	1			0.54
9	QTB26	Square head taper plug Z 3/8"	1			0.72

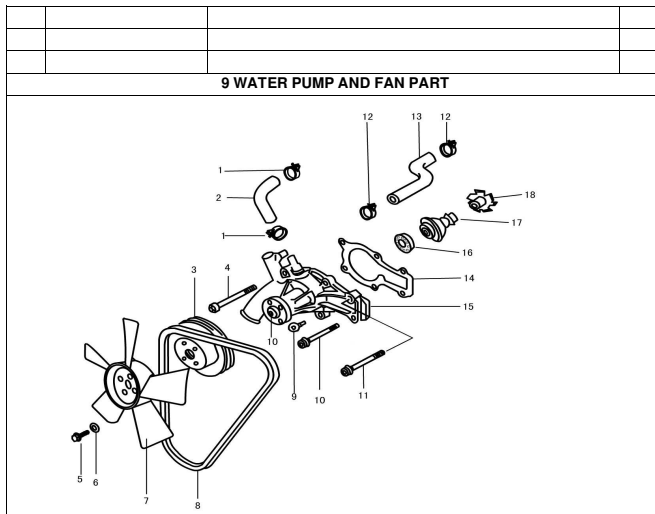
--	--	--

**8 OIL FILTER AND OIL PUMP PART**



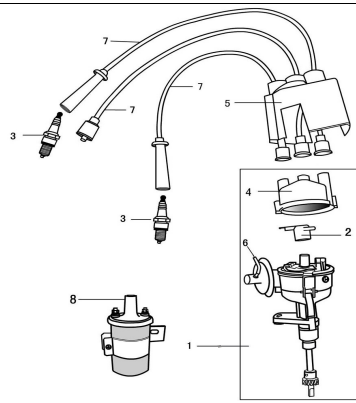
No.	Code name	Description	Qty	QTY-I/S	QTY-O/H	RETAIL
1	270Q-17000	Oil Filter assembly	1			10.02
2	GB/T9074.17-1988	Bolt assembly M6x48	2			0.54
3	LJ276MT-2-16000	Oil pump subassembly	1			78.90
4	GB/T9074.17-1988	Bolt assembly M6x53	1			0.54





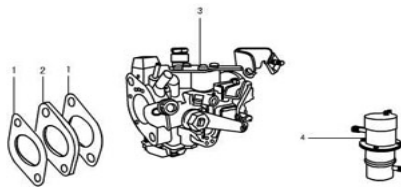
No.	Code name	Description	Qty	QTY-I/S	QTY-O/H	RETAIL
1	ZB/TT32005.1-88	Hose clamp	2			0.42
2	270Q-19011	Rubber pipe (2)	1			1.02
3	270Q-19013	water pump pulley	1			5.58
4	QTB10	Hexagon-headed bolt with edge M8×88	2			1.20
5	GB/T9074.15-1988	Hexagon head bolt M6×20	4			0.54
6	QTB32	Washer 7.5	4			0.54
7	276Q-19200	Fan assembly	1			8.88
8	QTB93A	Fan belt AV10×845	1			13.80
9	QTB10	Hexagon-headed bolt with edge M8×23	2			1.20
10	270Q-19002B	bolt	1			#VALUE!
11	QTB10	Hexagon-headed bolt with edge M8×78	2			1.08
12	ZB/TT32005.1-88	Hose clamp	2			0.42
13	LJ276MT-2-19009	Rubber pipe (1)	1			2.34
14	276Q-19001	Water pump gasket	1			0.78
15	276Q-19100	Water pump assembly	1			66.66
16	GB276-64	Roller bearing E60101	2			#VALUE!
17	270Q-F12-00	Water seal assembly	1			#VALUE!
18	276Q-19003	Impeller	1			#VALUE!

**10 DISTRIBUTOR AND ITS LINE UNIT**



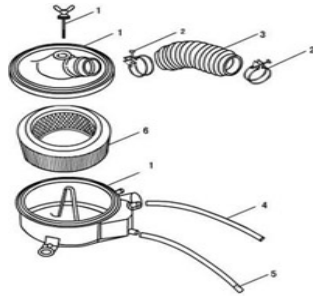
No.	Code name	Description	Qty	QTY-I/S	QTY-O/H	RETAIL
1	270Q-23510W	Distributor assembly ( non contact )	1			180.30
2	FDQ-60000	Rotor assembly	1			1.98
3	270Q-23800	Spark plug	2			3.66
4	FDQ-1-50000	Distributor cap assembly	1			7.80
5	270Q-23901	Distributor protective cover	1			3.48
6	LJ276MT-2-23501	Vacuum rubber tube	1			1.08
7	ZN410-128	High – tension leads	1			20.22
8	LJ462Q-1-3705010DW	Ignition coil assembly	1			30.12

**11 CARBURETOR PART**



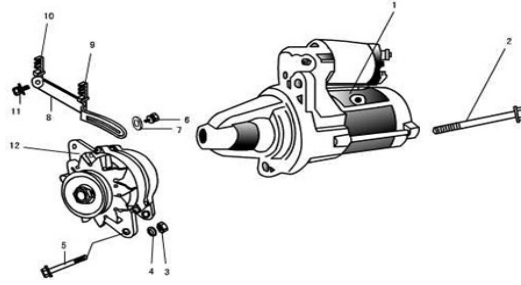
No.	Code name	Description	Qty	QTY-I/S	QTY-O/H	RETAIL
1	270Q-06004	Carburetor gasket	2			0.54
2	270Q-06003	Carburetor insulator	1			2.64
3	276Q-13000	Carburetor assembly	1			143.40
4	JB12D-H	Electric petrol pump	1			46.98


**12 AIR FILTER AND PIPE LINE PART**



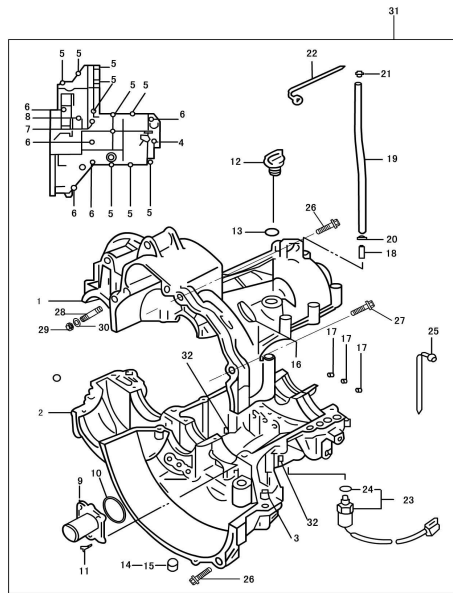
No.	Code name	Description	Qty	QTY-I/S	QTY-O/H	RETAIL
1	LJ276MT-2-07100F	Air filter housing	1			28.38
2	QK1706-03	Flexible hose clamp	2			0.42
3	LJ276MT-2-07001F	Flexible intake hose	1			5.58
4	LJ276MT-2-07002F	Rubber breathing pipe	1			3.42
5	270Q-07003	Storing dust pipes	1			#VALUE!
6	QK1706-05	air filter	1			6.60

13 STARTER , ALTERNATOR AND THEIR FASTENING PIECE

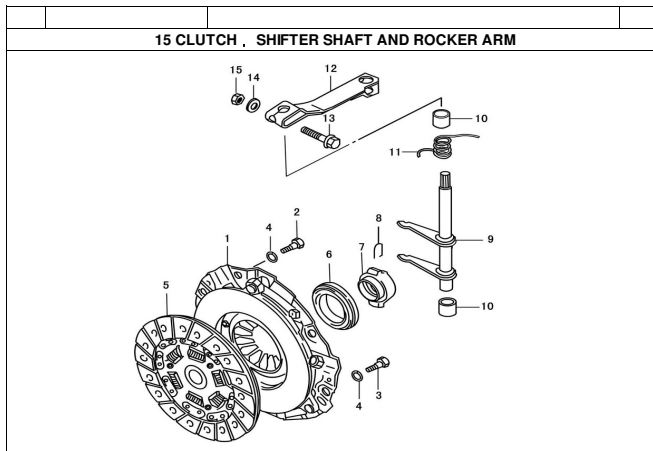


No.	Code name	Description	Qty	QTY-I/S	QTY-O/H	RETAIL
1	LJ368Q-3708010	Starter assembly	1			209.82
2	LJ368Q-1000068	Starter clamp bolt	2			1.98
3	QTB15	Hexagon nut M8-8	1			1.20
4	GB/T93-1987	Spring washer 8	1			0.54
5	270Q-02203A	Adjusting bolt	1			1.26
6	GB/T9074.15-1988	Bolt assembly M8×25	1			0.72
7	QTB30	Thick washerφ24×φ8.5×3	1			0.54
8	270Q-25010A	Alternator bracket	1			3.96
9	270Q-25001	Second fixed swift	1			0.24
10	270Q-25020	First fixed swift (insert)	1			0.42
11	GB/T9074.15-1988	Bolt assembly M8×20	1			0.42
12	LJ462Q-1-3701010D	Alternator	1			145.44

14 TRANSMISSION TANK

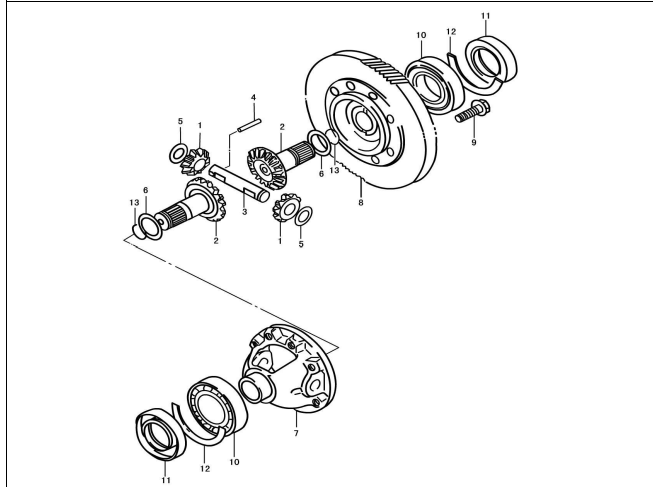


No.	Code name	Description	Qty	QTY-I/S	QTY-O/H	RETAIL
1	1701111	Upper housing of transmission	1			609.66
2	1701112	Lower housing of transmission	1			0.00
3	1701113	Locating pin	2			10.44
4	GBT5787—86	Bolt M6×40	1			0.78
5	GBT5787—86	Bolt M8×50	10			1.38
6	GBT5787—86	Bolt M8×70	5			1.50
7	GBT5787—86	Bolt M8×90	1			1.56
8	GBT5787—86	Bolt M8×135	1			1.98
9	1701301	Baffle plate of seal ring of the first shaft	1			11.76
10	GB3452.1—82	"O" type seal ring 40×2.65	1			0.78
11	GB819—85	Bolt M6×16	4			0.30
12	1701140	Dip stick assembly	1			2.64
13	GB3452.1—82	"O" type seal ring 15×2.65	1			0.42
14	ZBT32001.3—87	Bolt Z 1/2"—14	1			1.98
15	ZBT32001.9—87	Bolt Z 1/2"—14( magnetism )	1			2.34
16	1701017	Sight hole cover	1			0.54
17	1702050	Sealing cover assembly of shift lever	3			1.38
18	1701025	Breathing pipe tie-in	1			1.38
19	1701026	Breathing pipe	1			1.50
20	1701023	Perkins joint	1			0.72
21	1701027	Breathing pipe plug	1			0.42
22	1701024	Line fastener	1			0.42
23	3729010	Reverse switch	1			18.30
24	GB3452.1—82	"O" type seal ring 15×2.65	1			0.42
25	1701024	Line fastener	1			0.42
26	LJ368Q—1000163	Shouldered tap bolt	2			1.02
27	LJ368Q—1000169	Shouldered tap bolt	1			1.02
28	LJ368Q—1000167	Stud	1			0.72
29	GB/T6171—1986	Nut M10×1.25	1			0.30
30	GB/T848—1985	Washer 10	1			0.54
31	4T06CA1	Transmission assembly	1			2,500.02

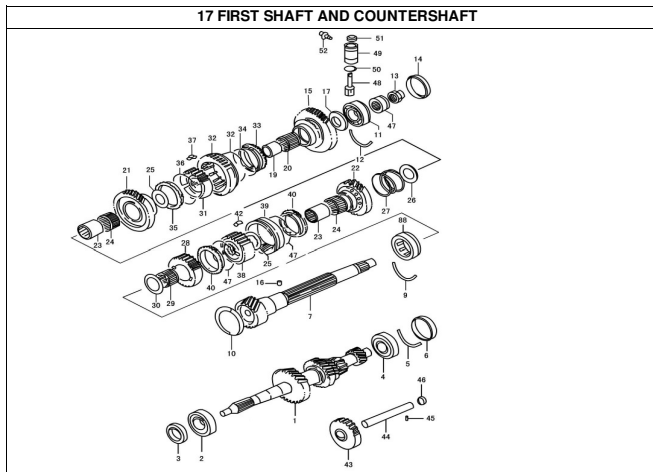


No.	Code name	Description	Qty	QTY-I/S	QTY-O/H	RETAIL
1	QST160HH14	Clutch pressure plate	1			106.38
2	LJ462Q—1—1005024	Clutch cover bolt	2			0.30
3	GB/T9074.15—1988	Bolt tab M8×16	4			0.42
4	GB859—87	Light gage spring washer8	6			0.12
5	DST160AT1	Clutch plate	1			77.34
6	1701500	Clutch release bearing	1			50.70
7	1701501	Release bearing carrier	1			0.00
8	1701022	Circlip	2			0.30
9	1701040	Clutch fork	1			22.62
10	1701019	Bushing ring	2			1.08
11	1701018	Tension spring	1			0.30
12	1701016	Clutch action arm	1			11.76
13	GB5789—86	Bolt AM8×35	1			1.02
14	GB97.1—85	Washer8	1			0.24
15	GB6170—86	Nut M8	1			0.30

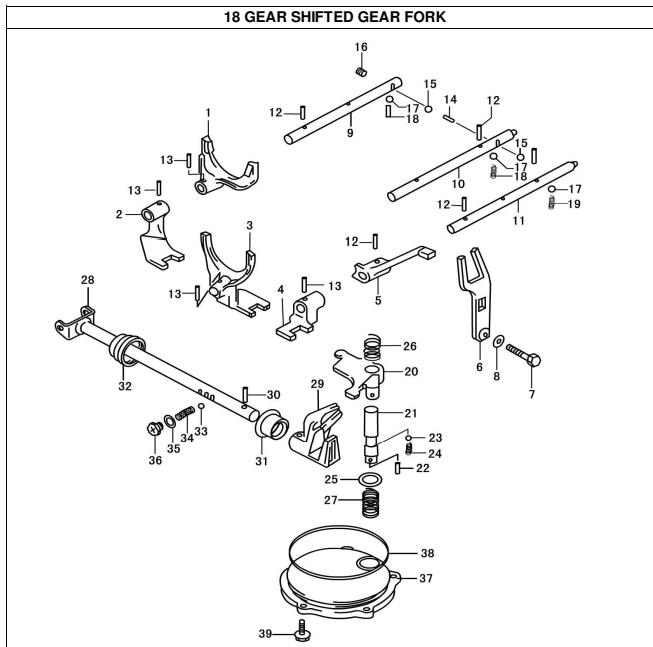
**16 DIFFERENTIAL**



No	Code name	Description	Qty	QTY-I/S	QTY-O/H	RETAIL
1	2303017	Differential Planet gear	2			16.86
2	2303015	Half axle of Differential	2			36.36
3	2303019	Planet gear shaft	1			8.52
4	GB309-84	Needle bearing D5×25.8	1			0.30
5	2303018	Planet gear washer	2			0.60
6-1	2303012	Half axle adjusting washer	0 - 2			0.72
6-2	2303013	Half axle adjusting washer	0 - 2			0.72
6-3	2303014	Half axle adjusting washer	0 - 2			0.72
7	2303011	Differential case	1			4.68
8	2303021	Main reduction gear	1			207.72
9	GB5789-86	Bolt M10×1.25×20-10.9	8			1.38
10	GB/T276-94	Endocentric ball bearing 6207Z/P63	2			15.60
11	1701090	Differential seal ring assembly	2			5.22
12	1701014	Thrust ring of Differential	2			1.38
13	2303016	Steel cable baffle ring	2			0.30



No.	Code name	Description	Qty	QTY-I/S	QTY-O/H	RETAIL
1	1701130	The first shaft assembly	1			155.82
2	GB/T276—94	Endocentric ball bearing 6204—2RS/P53	1			11.76
3	1701310	The first shaft seal ring assembly	1			2.64
4	GB/T276—94	Endocentric ball bearing 6204—2RS/P53	1			11.76
5	1701011	Thrust ring of the first shaft bearing	1			0.72
6	1701120	The first shaft seal cap assembly	1			1.56
7	1701201	Countershaft	1			121.20
8	1701250	Cylindrical roller bearing with Locking notch and without inner circle	1			20.82
9	1701013	Thrust ring of countershaft bearing (right)	1			0.72
10	1701060	Sealing cap assembly of countershaft (right)	1			1.98
11	GB/T276—94	Endocentric ball bearing 6204—2RS/P53	1			11.76
12	1701012	Thrust ring of countershaft bearing (left)	1			0.72
13	1701219	Tight nut of countershaft	1			80.52
14	1701050	Sealing cap assembly of Countershaft (left)	1			1.98
15	1701211	The first gear of countershaft	1			67.50
<b>17 FIRST SHAFT AND COUNTERSHAFT</b>						0.00
No.	Code name	Description	Qty			0.00
16	GB309—84	Needle P2×7.8	1			0.30
17	1701203	The first gear gasket of countershaft	1			1.74
18	GB308—84	Steel ball4.7625G60b	1			0.30
19	1701204	First gear bushing ring of countershaft	1			5.88
20	GB5846—86	Needle bearing K253024	1			7.80
21	1701212	The second gear of countershaft	1			63.66
22	1701213	The third gear of countershaft	1			66.36
23	1701205	The second and the third gears bushing ring	2			7.14
24	GB5846—86	Needle bearing K303520	2			9.18
25	1701206	The second and the third gears gasket	2			0.72
26	1701208	The third gear spacer	1			1.08
27	1701207	The second and the third gears pressure spring	1			1.98
28	1701214	Fourth gear of countershaft	1			6.54
29	GB5846—86	Needle bearing K253020	1			6.54
30	1701209	The fourth gear gasket	1			0.78
31	1701232	Low synchronizer shell	1			#VALUE!
32	1701231	Low synchronizer sleeve	1			#VALUE!
33	1701215	Low synchronizer ring (left)	1			14.46
34	1701217	Low synchronizer ring spring	1			1.98
35	1701216	Low synchronizer ring (right)	1			14.46
36	1701233	Low synchronizer spring	2			#VALUE!
37	1701234	Synchronizer guide block	3			#VALUE!
38	1701242	High synchronizer shell	1			#VALUE!
39	1701241	High synchronizer sleeve	1			#VALUE!
40	1701218	High synchronizer ring	2			13.02
41	1701243	High synchronizer spring	2			#VALUE!
42	1701234	Synchronizer guide block	3			#VALUE!
43	1701080	Racing gear of reverse gear	1			32.52
44	1701015	Reverse gear shaft	1			19.56
45	GB119—86	Pin D5×13	1			0.72
46	1701070	Sealing cap assembly of reverse gear shaft	1			0.78
47	1701202	Speed gage worm	1			12.36
48	1701029	Speed gage worm wheel	1			5.88
49	1701401	Speed gage worm wheel bushing ring	1			6.00
50	GB3452.1—82	"O" type seal ring	1			0.42
51	1701410	Seal ring assembly of Speed gage worm wheel	1			1.38
52	1701028	Speed gage thrust bolt	1			0.72
53		Low synchronizer shell assy				80.52
54		High synchronizer shell assy				51.96

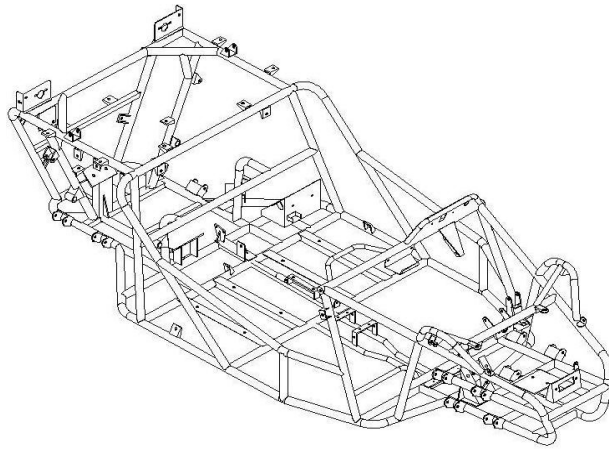


NO.	Code name	Description	Qty	QTY-I/S	QTY-O/H	RETAIL
1	1702014	Shift fork for the first gear	1			29.82
2	1702017	Shift fork for the first and the second gears	1			10.44
3	1702015	Shift fork for the third and the fourth gears	1			33.78
4	1702012	Reverse gear shift fork	1			20.82
5	1702011	Reverse gear shift cantilever	1			11.76
6	1702060	Shift fork assembly of reverse gear	1			20.82
7	GB5783—86	Bolt M10×1.25×35	1			1.02
8	1702019	Shift fork washer of reverse gear	1			0.60
9	1702014	Shift lever for first and the second gears	1			32.52

18 GEAR SHIFTED GEAR FORK						
NO.	Code name	Description	Qty	QTY-I/S	QTY-O/H	RETAIL
10	1702018	Shift lever for third and the fourth gears	1			33.78
11	1702016	Reverse gear shift lever	1			10.44
12	GB879—86	Pin 4.5×18	4			0.78
13	GB879—86	Pin 4.5×20	4			0.78
14	GB309—84	Needle 3×9.8	1			0.30
15	GB308—84	Steel ball 9.5250G60b	2			0.42
16	1701021	Hole plug	1			1.38
17	GB308—84	Steel ball 7.9375G60b	3			0.30
18	1702021	Locating spring of high and low speed shift level	2			0.72
19	1702022	Locating spring	1			0.72
20	1702082	Transposition Rocker arm	1			22.14
21	1702081	Transposition shaft	1			11.76
22	GB119—86	Pin D4×8	1			0.72
23	GB308—84	Steel ball 7.9375G60b	1			0.30
24	1702029	Locating spring	1			0.78
25	1702026	Transposition shaft washer	1			0.72
26	1702024	Long spring of Transposition shaft	1			1.68
27	1702025	Short spring of Transposition shaft	1			1.08
28	1702070	Shift shaft assembly	1			19.56
29	1702028	Transposition shaft rocker	1			23.58
30	GB879—76	Pin 5×22	1			1.02
31	1702040	Seal ring assembly of shift shaft	1			3.42
32	1702027	Dirt guard of Shift shaft	1			1.38
33	GB308—84	Steel ball 7.9375 G60b	1			0.30
34	1702022	Locating spring	1			0.72
35	1702019	Shifted gear shifting fork washer of reverse gear	1			0.60
36	ZBT31033—88	Hollow-headed and cross recess bolt M10×1.25×9	1			0.78
37	1702023	Transposition shaft cap	1			15.90
38	GB345.1—82	"O" type seal ring 9.5×2.65	1			1.56
39	GB789—86	Bolt AM6×20	1			0.72

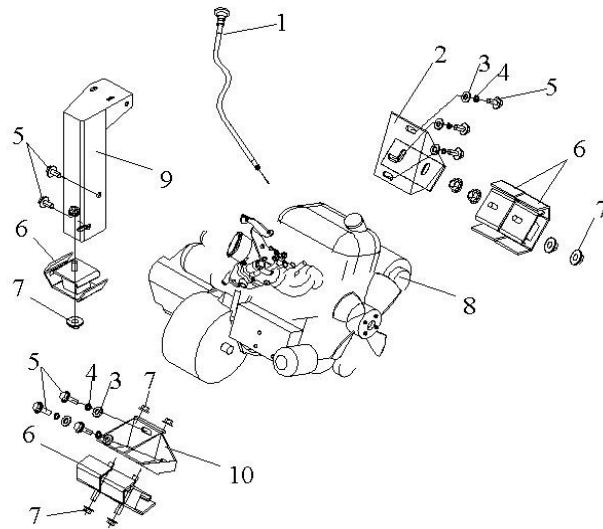



**1 FRAME**



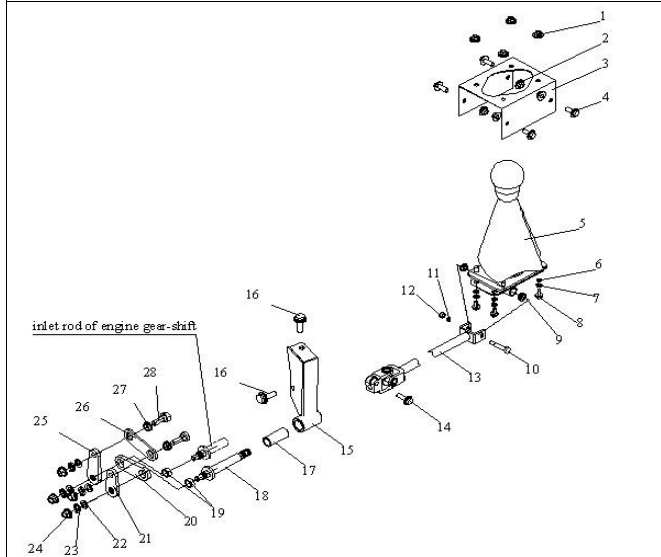
NO.	Code name	Description	Qty	QTY-I/S	QTY-O/H	RETAIL
1	D650.01.01.00.00	frame component	1			1,686.54

**2 ENGINE MOUNT ASSY**

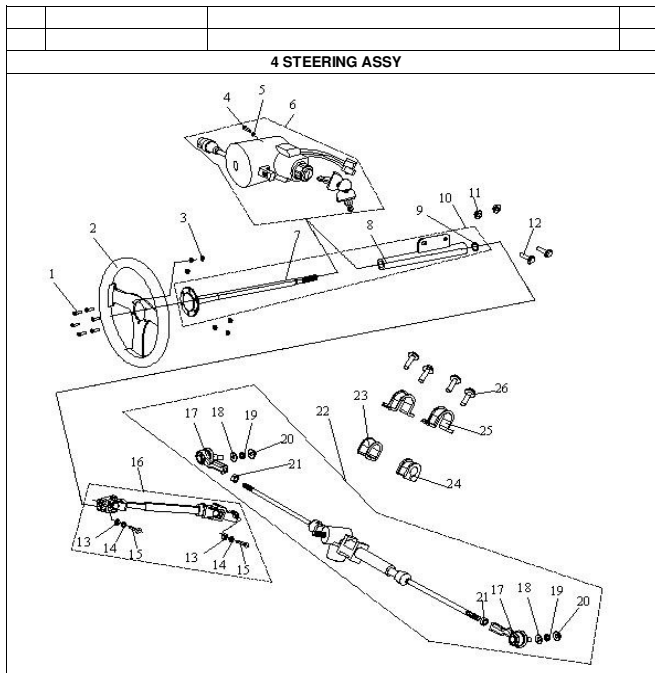


NO.	Code name	Description	Qty	QTY-I/S	QTY-O/H	RETAIL
1	D650.04.01.05.00	choke cable	1			4.38
2	D650.04.01.02.00	engine mount ,front	1			16.38
3	GB/T95	flat washer φ10 ( 11*20*2 )	10			0.12
4	GB/T 93-1987	spring washer φ10	10			0.12
5	GB/T5787-1986	bolt-washer M10*1.25*20	8			0.36
6	D650.04.01.00.01	engine rubber bumper	5			11.58
7	GB6177.1-2000	bolt-washer M10*1.25	1			0.18
8	D650.04.01.01.00	engine(LJ276M)	1			6,442.32
9	D650.04.01.03.00	engine mount ,left	1			33.66
10	D650.04.01.04.00	engine mount ,rear	1			22.14

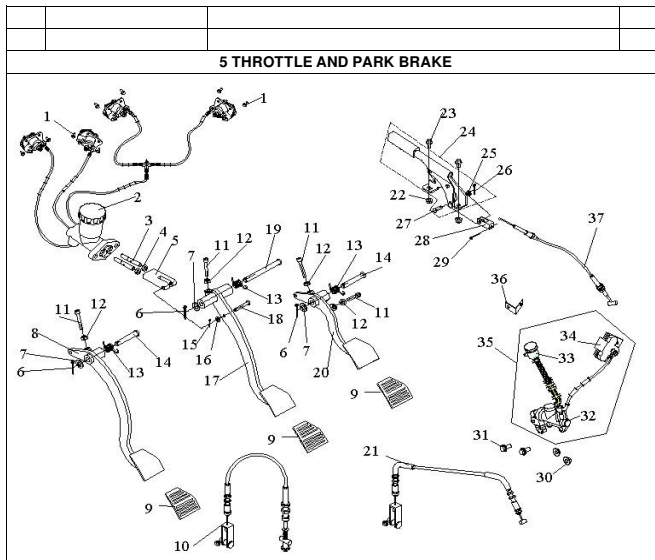
3 GEAR-SHIFT MECHANISM



NO.	Code name	Description	Qty	QTY-I/S	QTY-O/H	RETAIL
1	GB/T6177.1-2000	nut-lock M8	4			0.30
2	GB/T6177.1-2000	nut-lock M8	4			0.30
3	D650.05.02.02.03	shifter mount	1			14.46
4	GB/T5787-86	bolt-washer M8*20	4			0.36
5	D650.05.02.02.04	shifter assy	1			64.44
6	GB/T95 standard	washer Ø6(Ø6.6*Ø12*1.6)	4			0.12
7	GB/T 93-1987	spring washerØ6	4			0.12
8	GB/T5787-86	bolt-washer M6*15	4			0.24
9	D650.05.02.02.02	bush,shift gear handgrip	2			0.54
10	D650.05.02.02.01	screw axle,shift gear handgrip	1			1.02
11	GB/T 93-1987	spring washerØ6	1			0.12
12	GB/T 6170-2000	nut M6 (m=5.2 )	1			0.12
13	D650.05.02.03.00	shift level	1			52.92
14	GB/T5787-86	bolt-washer M8*35	1			0.42
15	D650.05.02.04.00	guide	1			16.38
16	GB/T5787-86	bolt-washer M10*1.25*20	2			0.36
17	JD0580002	nylon bush	1			0.60
18	D650.05.02.01.01	shifter shaft	1			22.14
19	D650.05.02.02.02	copper sleeve	2			1.74
20	D650.05.02.02.03	thick pivot plate	1			9.66
21	D650.05.02.02.05	short crank	1			14.46
22	GB/T95 standard	washer Ø10(Ø10.5*Ø18*Ø1.6)	2			0.12
23	GB/T 93-1987	spring washerØ10	2			0.12
24	GB6177.1-2000	nut-washer M10*1.25	2			0.18
25	D650.05.02.01.04	long crank	1			14.46
26	D650.05.02.01.06	thin pivot plate	1			7.32
27	D650.05.02.01.08	copper flange cover,thin rod	2			1.98
28	D650.05.02.01.07	threaded shaft	2			1.98
						0.00
						0.00

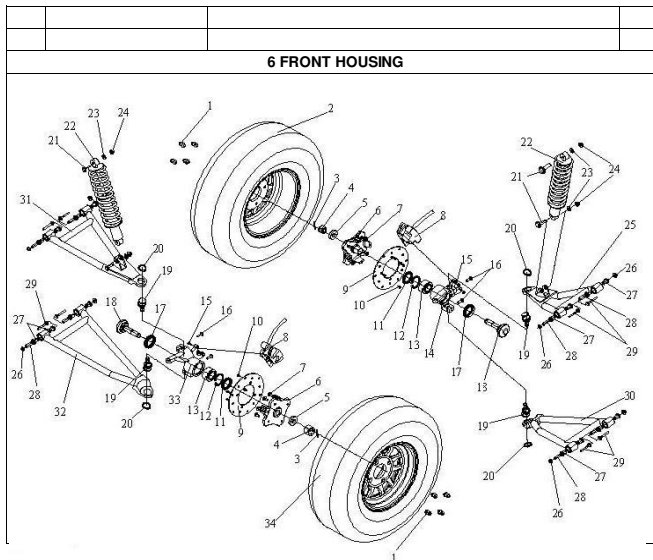


NO.	Code name	Description	Qty	QTY-I/S	QTY-O/H	RETAIL
1	GB/T818-2000	bolt cross M6*20	6			0.24
2	D650.05.01.00.01	steering wheel	1			49.99
3	GB6177.1-2000	nut flange lock M6	6			0.18
4	GB/T819.1-2000	bolt M6*10	1			0.12
5	GB/T 93-1987	spring washer Ø6	1			0.12
6	D650.06.00.08.00	integrated switch assy	1			39.99
7	D650.05.01.01.01	steering wheel shaft	1			#VALUE!
8	D650.05.01.01.02	steering column housing	1			#VALUE!
9	GB/T894.1-1986	circlip Ø15, external	1			0.54
10	D650.05.01.01.00	steering column assy	1			50.04
<b>4 STEERING ASSY</b>						0.00
NO.	Code name	Description	Qty			
11	GB/T6177.1-2000	nut washer M10*1.25	2			0.18
12	GB5787-86	bolt washer M10*1.25*25	2			0.42
13	GB/T96 big	washer Ø8 (8.4*24*2)	2			0.18
14	GB/T 93-1987	spring washer Ø8	2			0.12
15	GB/T5782-2000	bolt M8*25	2			0.42
16	D650.05.01.02.00	steering universal rod	1			46.20
17	D650.05.01.03.01	tie rod end	2			12.99
18	GB/T95-1995	washer Ø10	2			0.12
19	GB/T93-1987	spring washer Ø10	2			0.12
20	GB/T 6172.2-2000	nut lock M10*1.25(nylon)	2			0.30
21	GB/T 6170-2000	nut M12*1.5	2			0.30
22	D650.05.01.03.00	steering gear box	1			173.10
23	D650.05.01.00.04	thin rubber cover	1			1.98
24	D650.05.01.00.03	thick rubber cover	1			1.98
25	D650.05.01.00.02	mounting rack	2			1.98
26	GB5787-86	bolt washer M10*1.25*25	4			0.42

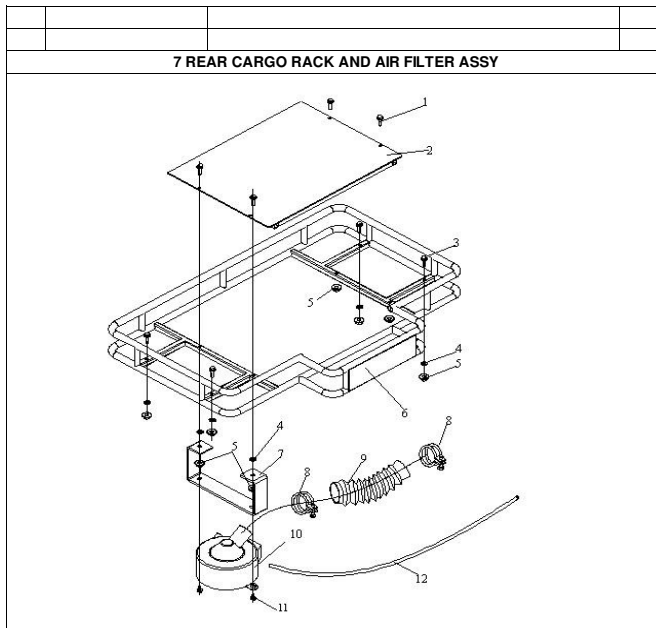


NO.	Code name	Description	Qty	QTY-I/S	QTY-O/H	RETAIL
1	GB/T5787-86	bolt-washer M8*20	8			0.36
2	D650.07.01.01.00	four-caliper brake assy	1			317.34
3	D650.07.01.00.04	master cylinder rod	2			1.02
4	GB/T6172.1-2000	nut M8(m=6.8)	2			0.12
5	D650.07.01.00.03	master cylinder rod block	1			6.30
6	GB/T91-2000	cotter pin 3.2*30	3			0.24
7	GB/T95standard	washer Ø10(Ø10.5*Ø18*Ø1.6)	3			0.12
8	D650.07.04.02.00	clutch pedal	1			35.58
9	D650.07.01.00.05	pedal rubber cover	3			4.38
10	D650.07.04.01.00	cable,clutch	1			25.99
11	GB/T70.1-2000	bolt,hex M6*55	4			0.42
12	GB/T 6170-2000	nut M6 (m=5.2)	4			0.18
13	D250.10.003	spring	3			1.02
14	D650.07.03.00.01	short pivot pin.10*60	2			2.46
15	GB/T91-2000	cotter pin 2*25	1			0.12

5 THROTTLE AND PARK BRAKE						
NO.	Code name	Description	Qty	QTY-I/S	QTY-O/H	RETAIL
16	GB/T95standard	washer Ø6(Ø6.6*Ø12*1.6)	1			0.12
17	D650.07.01.02.00	brake pedal	1			31.74
18	D650.07.01.00.01	axle. 6*40	1			1.98
19	D650.07.01.00.02	long pivot pin.10*105	1			3.42
20	D650.07.03.02.00	throttle pedal	1			25.98
21	D650.07.03.01.00	cable, throttle	1			25.99
22	GB/T6177.1-2000	nut,flange lockM8	2			0.30
23	GB/T5787-86	bolt-washer M8*20	2			0.36
24	D650.07.02.01.00	park assy	1			9.18
25	GB/T848 small	washer Ø8(Ø8.4*Ø15*Ø1.6)	1			0.12
26	GB/T91-2000	cotter pin 3.2*30	1			0.24
27	D650.07.02.01.01	axle 8*24	1			1.02
28	D650.07.02.00.01	connection,parking brake	1			12.36
29	GB/T91-2000	cotter pin 3.2*30	1			0.24
30	D650.07.02.02.00	nut,flange lock M8	2			0.30
31	D650.07.02.00.02	bolt-washer M8*30	2			0.36
32	D650.07.02.03.01	pump,single hydraulic assy	1			60.60
33	D650.07.02.03.02	oil cup,single hydraulic assy	1			7.74
34	D650.07.02.03.03	caliper,single hydraulic assy	1			62.52
35	D650.07.02.03.00	single hydraulic park brake assy	1			130.80
36	D650.07.02.00.03	oil cup brasket	1			3.42
37	D650.07.02.00.20	park brake cable	1			23.99

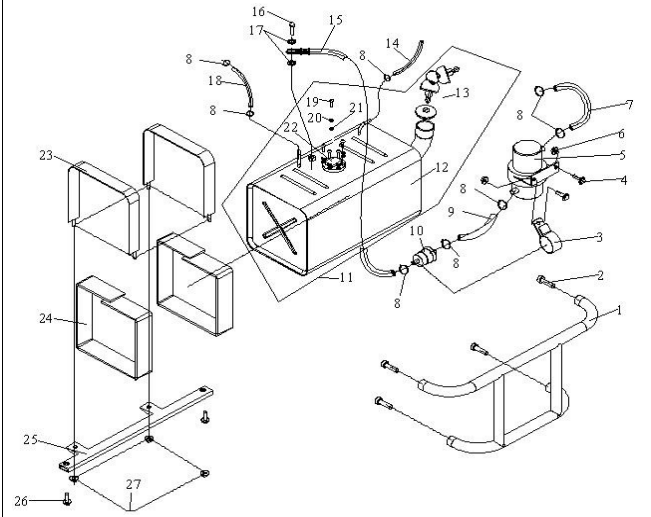


NO.	Code name	Description	Qty	QTY -I/S	QTY -O/H	RETAIL	
1	D650.03.02.00.02	wheel nut M10*1.25	8			1.50	
2	D650.03.01.01.00	wheel(25*8-12),FL	1			351.96	
3	GB/T 91-2000	cotter pin 4*40	2			0.30	
4	GB/T9457-1988	nut-castle M18*1.5,front axle	2			3.42	
5	D650.03.01.00.08	washer,front axle	2			2.34	
6	D650.03.01.00.01	front hub	2			62.52	
7	D650.03.02.00.03	bolt M10*1.25,hub	8			1.98	
8	D650.07.01.01.00	four-calliper brake assy	1			81.78	
9	D650.03.02.00.05	brake disc	2			24.06	
10	D650.03.02.00.08	bolt M6,brake disc	8			1.02	
11	D650.03.01.00.04	seal (40X55X6)	2			1.20	
12	GB/T893.2-1986	circlipφ55,internal	2			0.48	
<b>6 FRONT HOUSING</b>							0.00
NO.	Code name	Description	Qty				
13	D650.03.01.00.05	bearing(30X55X30X25),front hub	2			50.04	
14	D650.03.01.00.07	stub axle,L	1			52.92	
15	GB/T5787-1986	bolt-washer M8*20	4			0.36	
16	GB/T5787-1986	bolt-washer M10*1.5*30*20	4			0.60	
17	D650.03.01.00.06	seal (40X58X7X5),internal	2			1.50	
18	D650.03.01.00.03	axle,front	2			12.54	
19	D650.02.01.00.03	ball joint	4			13.50	
20	GB/T894.2-1986	circlipφ29,external	4			0.30	
21	GB/T5787-1986	bolt-washer M12*1.5*45*18	4			0.78	
22	D650.02.03.01.00	front shock absorber	2			119.28	
23	GB/T97.1standard	washer ( φ12 φ13*φ24*2.5 )	4			0.18	
24	GB6177.1-2000	nut,flange M12*1.5	4			0.18	
25	D650.02.01.03.00	suspension arm,upper,FL	1			37.50	
26	GB6177.1-2000	nut,flange M10*1.25	8			0.18	
27	D650.02.01.00.01	bush,suspension arm	8			1.50	
28	D650.02.01.00.02	spacer,suspension arm	4			2.34	
29	GB/T5787-1986	bolt-washer M10*1.25*75*18	8			1.02	
30	D650.02.01.04.00	suspension arm,lower,FL	1			37.50	
31	D650.02.01.01.00	suspension arm,upper,FR	1			37.50	
32	D650.02.01.02.00	suspension arm,lower,FR	1			37.50	
33	D650.03.01.00.02	stub axle,R	1			52.92	
34	D650.03.01.02.00	wheel(25*8-12),FR	1			351.96	
						0.00	
						0.00	

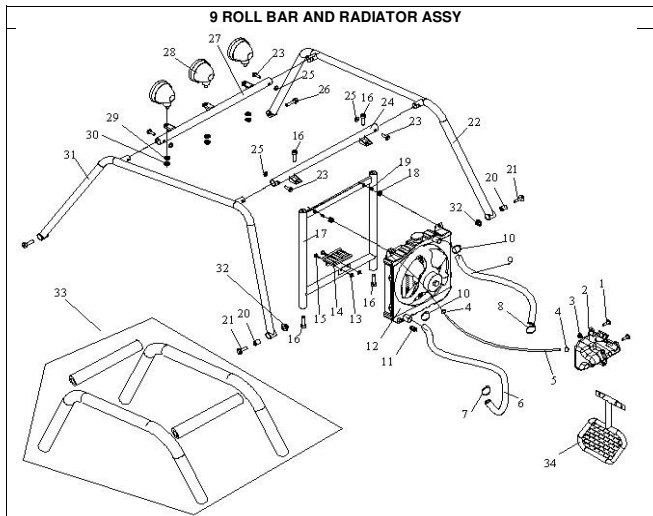


NO.	Code name	Description	Qty	QTY-4/S	QTY-O/H	RETAIL
1	GB/T5787-1986	bolt-washer M8*35	4			0.42
2	D650.08.01.02.00	cover,rear rack	1			59.64
3	GB/T5787-1986	bolt-washer M8*40	4			0.48
4	D650.04.05.00.04	thick rubber washer	6			1.02
5	GB6177.1-2000	bolt-washer M8	8			0.30
6	D650.08.01.01.00	rear rack	1			76.98
7	D650.04.05.00.05	air cleaner bracket	1			5.82
8	D650.04.05.00.02	flexible hose clamp	2			1.98
9	D650.04.05.00.01	flexible hose	1			4.86
10	D650.04.05.01.00	air cleaner assy	1			81.78
11	D650.07.01.00.02	bolt-washer M8*16	2			0.30
12	D650.04.05.00.03	tube , recycle exhaust gas	1			1.50

**8 FUEL TANK AND GASOLINE PUMP**

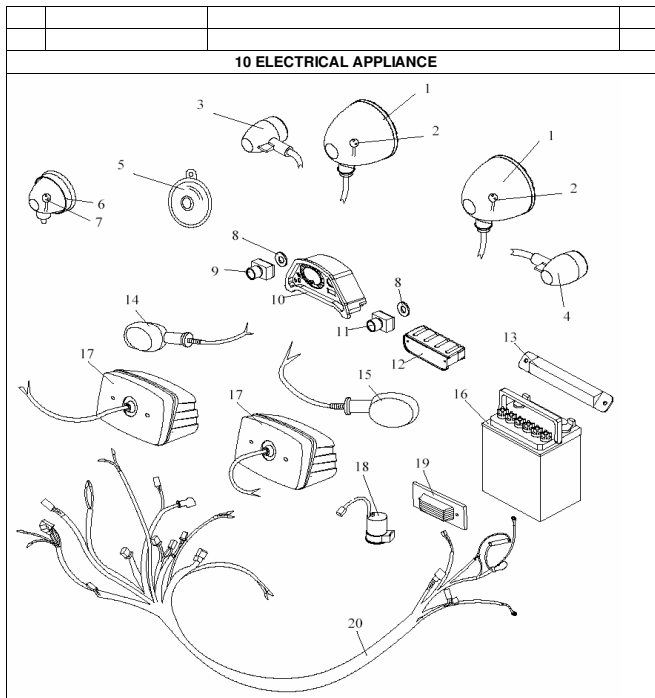


NO.	Code name	Description	Qty	QTY-I/S	QTY-O/H	RETAIL
1	D650.01.02.06.00	rear bumper bar	1			62.52
2	GB/T70.1-2000	bolt-hexagon M12*1.5*30	4			0.60
3	D650.04.03.00.10	clamp,air cleaner assy	1			1.50
4	GB/T5787-1986	bolt-washer M8*25	2			0.42
5	D650.04.03.02.00	gasoline pump	1			43.32
6	GB/T6177.1-2000	nut-washer M8	2			0.18
7	D650.04.03.00.07	outlet tube(230),gasoline pump	1			1.02
8	D650.04.03.00.04	hose clamp	8			0.36
9	D650.04.03.00.11	inlet tube(450),gasoline pump	1			1.50
10	D650.04.03.00.05	fuel filter	1			13.50
11	D650.04.03.01.00	fuel tank assy	1			142.32
12	D650.04.03.01.01	bare fuel tank	1			94.26
13	D650.04.03.01.03	fuel tank cap	1			6.30
14	D650.04.03.00.01	air vent ((360)	1			1.20
15	D650.04.03.03.00	gasoline outlet tube	1			6.78
16	D650.04.03.00.02	bolt ,gasoline outlet	1			1.98
17	D650.04.03.00.08	copper washer	2			0.54
18	D650.04.03.00.03	gasoline tube(450) return	1			1.20
19	GB/T818-2000	bolt-cross M5*12	5			0.24
20	GB/T95-1985	washer 5(5.5*10*1)	5			0.12
21	GB/T93-1987	spring washerØ5	5			0.12
22	D650.04.03.01.02	fuel level sensor unit	1			5.58
23	D650.04.03.04.00	fuel tank strap	2			7.74
24	D650.04.03.00.06	fuel tank rubber strap	2			2.94
25	D650.01.02.07.00	fixed rod,fuel tank	1			33.66
26	GB/T5787-1986	bolt-washer M8*16	2			0.30
27	GB6177.1-2000	nut-wahser M10*1.5	4			0.18

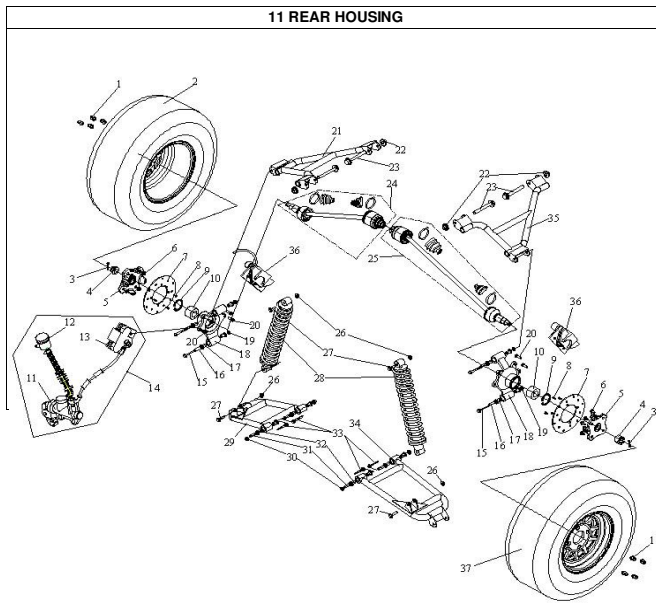


NO.	Code name	Description	Qty	QTY-I/S	QTY-O/H	RETAIL
1	GB/T5787-1986	bolt-washer M8*20	2			0.36
2	D25009903	overflow bottle	1			9.18
3	GB/T6177.1-2000	nut-flange lock M8	2			0.30
4	D650.04.03.00.04	hoop (10-16)	2			0.36
5	D650.04.02.00.04	overflow bottle hose	1			9.66
6	D650.04.02.00.01	water outlet hose,engine	1			34.14
7	D650.04.02.00.03	hoop ( 25-38 ) ,water tube	1			0.42
8	D650.04.02.00.03	hoop ( 25-38 ) ,water tube	1			0.42
9	D650.04.02.00.02	water inlet hose,engine	1			31.26
10	D650.04.02.00.03	hoop ( 25-38 ) ,water tube	2			0.42
11	D650.04.02.03.00	water temperature switch	1			19.26
12	D650.04.02.01.00	radiator assy	1			274.08
13	GB/T6177.1-2000	nut-flange lock M6	2			0.18
14	D650.04.02.02.00	radiator lower mount	1			14.46
15	GB/T5787-86	bolt washer M6*15	2			0.24
16	GB/T70.1-2000	bolt hexagonal M12*1.5*30	4			0.60
17	D650.01.02.05.00	radiator mounting bar	1			43.32
18	JD1910003	radiator rubber washer	2			0.24
19	JD1910002	spacer,radiator assy	2			0.54
20	D250.11.771	nylon bush	2			1.08
21	GB/T5787-1986	bolt washer M12*1.5*30	2			1.02
22	D650.01.02.02.00	right roll bar	1			62.52
23	GB/T5787-1986	bolt washer M10*1.25*45	4			0.60
24	D650.01.02.04.00	rear cross bar	1			38.52
25	GB/T6177.1-2000	nut washer M10*1.25	4			0.18
26	GB/T70.1-2000	bolt hexagonal M12*1.5*30	2			0.60
27	D650.01.02.03.00	front cross bar	1			48.12
28	D650.06.00.12.00	shooting light	3			28.86
29	GB/T93-1987	spring washerØ12	3			0.24
30	GB/T6177.1-2000	nut M12	3			0.30
31	D650.01.02.02.00	left roll bar	1			62.52
32	GB/T6177.1-2000	nut washer M12*1.5	2			0.30
33	D650.01.02.00.01	foam cover	1			22.50
34	D650.01.02.09.00	engine fan guard	1			9.18

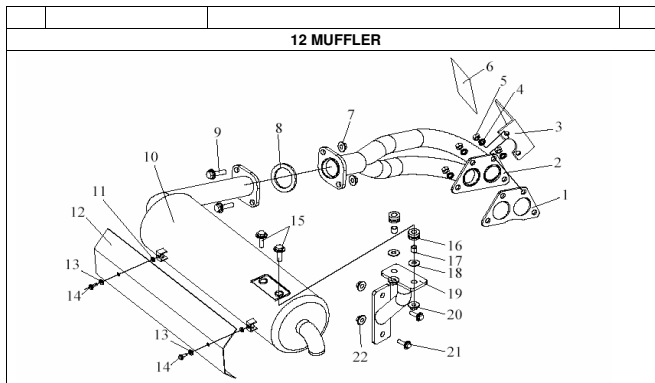




NO.	Code name	Description	Qty	QTY-I/S	QTY-O/H	RETAIL
1	D650.06.00.03.00	headlight	2			62.52
2	D650.06.00.03.01	bulb of headlight(35W/35W)	2			14.46
3	D650.06.00.05.00	turning signal,front,left	1			19.26
4	D650.06.00.15.00	turning signal,front,right	1			19.26
5	D650.06.00.09.00	horn	1			8.22
6	D650.06.00.12.00	spot light	3			28.86
7	D650.06.00.12.01	bulb of shooting light	3			7.26
8	JD0460003	washer	2			0.54
9	D650.06.00.14.00	spot light switch	1			4.86
10	D650.06.00.07.00	instrument cluster	1			206.76
11	D650.06.00.13.00	horn button	1			4.86
12	D650.06.00.00.01	cover of electrical plug connection	1			1.38
13	D650.01.02.08.00	battery bracket	1			14.46
14	D650.06.00.06.00	turning signal,rear,left	1			19.26
15	D650.06.00.16.00	turning signal,rear,right	1			19.26
16	D650.08.01.00.01	battery(36Ah)	1			177.90
17	D650.06.00.10.00	tail light	2			19.99
18	D650.06.00.04.00	flasher unit	1			43.32
19	D650.06.00.11.00	regulator	1			9.18
20	D650.06.00.01.00	harness,wiring	1			113.52

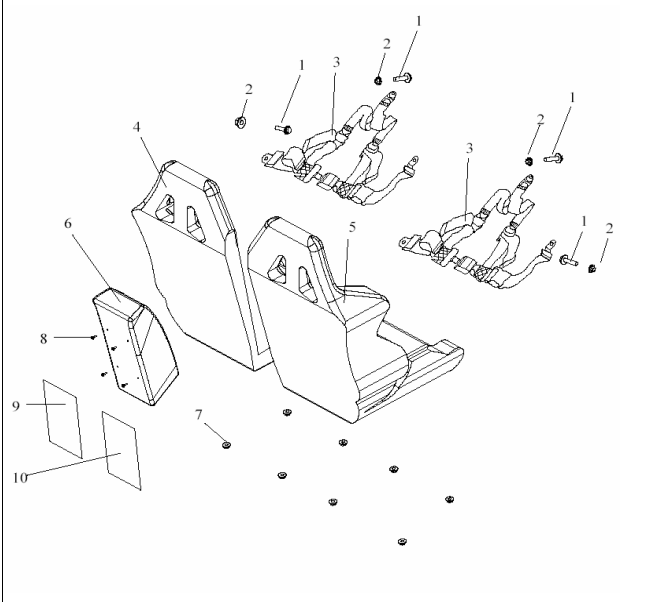


NO.	Code name	Description	Qty	QTY-I/S	QTY-O/H	RETAIL
1	D650.03.02.00.02	wheel nut M10*1.25	8			1.50
2	D650.03.02.01.00	wheel(25X10-12),BL	1			365.40
3	GB/T91-2000	cotter pin 4*40	2			0.30
4	D650.03.02.00.06	nut-castle M22*1.5,rear shaft	2			1.02
5	D650.03.02.00.04	rear hub	2			48.12
6	D650.03.02.00.03	bolt M10*1.25,hub	16			1.98
7	D650.03.02.00.05	brake disc	2			24.06
8	D650.03.02.00.08	bolt M6,brake disc	8			1.02
9	GB/T893.2-86	circlipφ55,internal	2			0.48
10	D650.03.02.00.07	bearing(Ø30XØ55X32),rear hub	2			51.00
11	D650.07.02.03.01	pump,single hydraulic assy	1			2.94
12	D650.07.02.03.02	oil cup,single hydraulic assy	1			39.48
13	D650.07.02.03.03	caliper,single hydraulic assy	1			21.18
14	D650.07.02.03.00	single hydraulic park brake assy	1			130.80
15	GB/T5787-86	bolt-washer M10*1.25*100*20	4			1.50
16	D650.02.02.00.02	spacer,shaft carrier	4			2.82
17	D650.02.02.00.01	bush,shaft carrier	8			2.46
18	D650.03.02.00.01	shaft carrier	2			67.32
19	GB/T6177.1-2000	bolt-washer M10*1.25	4			0.18
20	GB/T5787-86	bolt-washer M8*20	6			0.36
21	D650.02.02.03.00	upper suspension arm,BL	1			44.28
22	GB/T6177.1-2000	nut-washer M10*1.25	4			0.18
23	GB/T5787-86	bolt-washer M10*1.25*75*18	4			1.02
24	D650.03.02.02.00	left proppeller shaft	1			182.70
25	D650.03.02.03.00	right proppeller shaft	1			182.70
26	GB/T6177.1-2000	nut-washer M12*1.5	4			0.30
27	GB/T5787-86	bolt-washer M12*1.5*60*18	4			1.02
28	D650.02.03.02.00	rear shock absorber	2			119.28
29	D650.02.02.04.00	lower suspension arm,LB	1			44.28
30	GB/T6177.1-2000	nut-washerM10*1.25	4			0.18
31	D650.02.01.00.02	spacer,suspension arm	8			2.34
32	D650.02.01.00.01	bush,suspension arm	16			1.50
33	GB/T5787-86	bolt-washer M10*1.25*75*18	4			1.02
34	D650.02.02.02.00	lower suspension,RB	1			44.28
35	D650.02.02.01.00	upper suspension,RB	1			44.28
36	D650.07.01.00.00	four-calliper brake assy	1			81.78
37	D650.03.02.03.00	wheel (25X10-12),RB	1			365.40
						0.00
						0.00



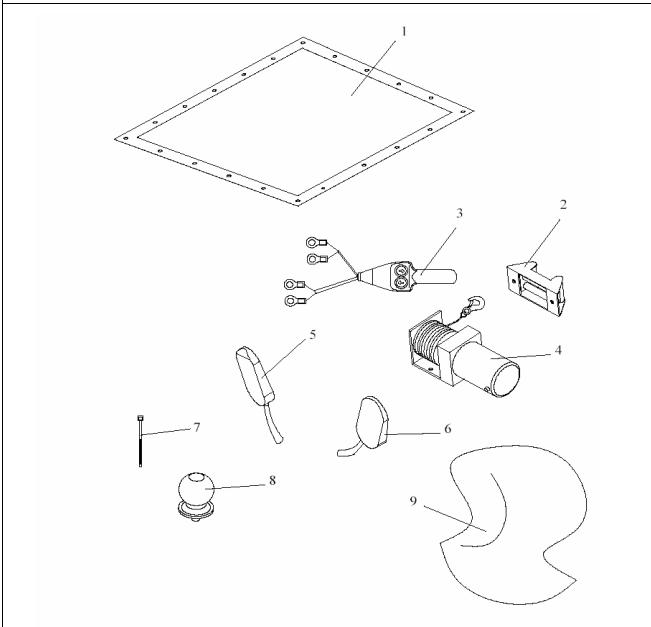
NO.	Code name	Description	Qty	QTY-I/S	QTY-O/H	RETAIL
1	270Q-01024	exhaust gasket to head	1			1.98
2	D650.04.04.02.00	front exhaust pipe	1			33.66
3	D650.04.04.00.03	front pipe sheild	1			5.70
4	GB/T 93-1987	spring washer φ8	4			0.12
5	GB/T6172.1-2000	nut M8(m=6.8)	4			0.12
6	D650.04.04.00.04	sheet of heat insulation (65*65)	1			1.02
7	GB6177.1-2000	nut self-lock M8	2			0.30
8	D650.04.04.00.01	carbon bush	1			2.46
9	GB/T5787-1986	bolt washer M8*30	2			0.42
10	D650.04.04.01.00	muffler	1			57.72
11	D650.04.04.00.05	asbestos washer	2			0.12
12	D650.04.04.00.02	heat insulation guard ,exhaust pipe	1			14.46
13	D650.04.04.00.06	lock washer	2			0.12
14	GB/T5787-1986	bolt washer M6*12	2			0.24
15	GB/T5787-1986	bolt washer M8*30	2			0.42
16	GB/T6172.1-2000	rubber cover,muffler	2			1.26
17	JD1910002A	spacer	2			0.54
18	GB/T96 big	washer φ8 ( φ8.4*φ24*2 )	2			0.12
19	D650.04.04.03.00	muffler bracket	1			11.58
20	GB6177.1-2000	self-lock M8	2			0.30
21	GB/T5787-1986	bolt washer M10*1.25*25	2			1.56
22	GB6177.1-2000	nut washer M10*1.25	2			0.36

**13 SEAT AND SAFETY GELT**



NO.	Code name	Description	Qty	QTY-#/S	QTY-O/H	RETAIL
1	GB/T5787-86	bolt washer M8*20	4			0.36
2	GB/T6177.1-2000	nut washer M8	4			0.30
3	D650.08.01.00.01	seat belt	1			36.54
4	D650.08.01.03.00	left seat	1			235.62
5	D650.08.01.04.00	right seat	1			235.62
6	D650.08.01.00.02	center pad	1			19.26
7	GB/T6177.1-2000	nut washer M8	8			0.30
8	GB/T5787-86	bolt washer M6*20	4			0.24
9	D650.08.01.00.08	sheet of heat insulation (1)	1			2.46
10	D650.08.01.00.09	sheet of heat insulation (2)	1			2.46

**14 OTHERS PARTS**



NO.	Code name	Description	Qty	QTY-#/S	QTY-O/H	RETAIL
1	D650.08.01.00.05	canvas roof	1			22.62
2	D650.08.01.06.00	wire cable guide	1			33.66
3	D650.08.01.05.01	switch assy.electrical winch	1			91.38
4	D650.08.01.05.00	electrical winch	1			264.48
5	D650.08.01.00.06	driving mirror ,left	1			19.26
6	D650.08.01.00.07	driving mirror ,right	1			19.26
7	D650.08.05.00.06	cable tie	20			0.12
8	GB/T5787-86	tow balkφ50	1			15.90
9	D650.08.01.00.10	cloth cover for entire kart	1			81.78